

SAFETY & STORAGE CABINETS

Justrite® Sure-Grip® EX Safety Storage Cabinets offer top performance for flammable liquid storage and protection.

EXtra safe, EXtra sturdy, EXtra secure

Fusible links hold doors wide open and melt at 165°F (74°C) for automatic closure (on self-closing models).

Sturdy 18-gauge (1-mm) double wall steel construction with 1-1/2-in (38-mm) of insulating air space.

Easy-close, self-latching doors; U-Loc™ handle (shown below) does not require manual rotation to engage mandatory three-point latch.

Fully welded, not riveted, construction holds squareness for longer life and offers greater protection in a fire since air gaps are reduced.

Continuous piano hinge provides smooth closure.

Durable and chemical-resistant, lead-free powder-coat paint finish, inside and out, retains high gloss look and minimizes the effects of corrosion and humidity.

Dual vents with built-in flash arresters strategically placed at bottom and opposite top.



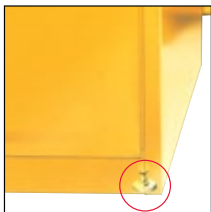
45-gallon (170-liter) self-close door style

Concealed self-close mechanism provides obstruction-free access to top shelf space. Self-indexing doors guarantee they will close in sequence and ensure a tight closure from top to bottom (on self-closing models). Patent pending

Patented SpillSlope® safety shelves direct spills to back and bottom of leakproof sump. Adjustable on 3-in (76-mm) centers, they meet ANSI standards with a 350-lb (159-kg) safe allowable load.

Welded shelf hangers interlock with shelf to offer maximum “nonslip” stability with no flimsy brackets to lose.

2-in (51-mm) leakproof containment sump holds leaks and meets EPA requirements.



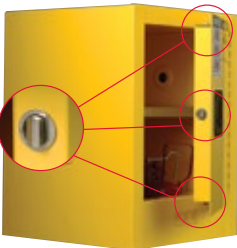
Adjustable leveling feet make it easy to balance cabinets on uneven surfaces.



Built-in grounding connector (on outside side panel) for easy grounding. Shown here with optional ground wire 08500.



Complies with OSHA 29 CFR 1910.106 and NFPA Code 30, section 9.5.3; FM Approved



Stainless steel, 3-point bullet self-latching system provides easy, fail-safe, positive door closure with increased heat resistance. Patent pending



Easily secure your contents—U-Loc™ handle includes double key set or can be padlocked (not included) for greater security. Patent pending



Patented SpillSlope® safety shelves direct spills to back and bottom of leakproof sump; adjust on 3-in (76-mm) centers for versatile storage. Meets ANSI MH28.1



Welded construction holds squareness for long life; door astragal provides extra sturdiness.



Highly visible HazAlert™ reflective label provides warning—“Flammable – Keep Fire Away” in English, Spanish, and French.

for Flammables

How to Select A Safety Cabinet

Size and type of container:





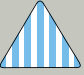

Determine if you are storing safety cans, 30- and 55-gallon (110- and 200-L) drums, smaller paint cans, 1 quart (4-L) bottles, aerosols, dispenser cans or other containers.

Capacity:

Select specialty cabinets for on-the-spot needs; larger cabinets for expanded or large quantity storage.

Type of chemical:

Easily identify, organize and segregate liquids by using the correct color cabinets.

	Yellow for flammable liquids
	Red for paints, inks, and other combustible liquids
	Blue for corrosives and hazardous liquids
	Green for pesticides and insecticides
	Silver or neutral colors for laboratory settings
	White, beige or gray for waste or outdoor lockers

Door style

Select from **manual** or **self-closing** door style cabinets. Cabinets with self-closing doors provide an extra measure of protection. Since the human element of remembering to close the door is neutralized by the automatic closing feature.

Manual

Economical manual-close doors permit doors to open a full 180 degrees. When pushed closed they will automatically self-latch.



Self-Close

This style self-indexes and self-latches to automatically shut doors upon release. Mechanism is concealed in the top wall, maximizing available shelf space. Fusible links hold doors open during use. In the event of a fire, fusible links will melt at 165°F (74°C) to automatically close doors.



Concealed mechanism



Fusible link

How to maintain a cabinet

Always store chemicals in closed containers. Clean up spills promptly. Be sure cabinet is level and located indoors in a well ventilated, low humidity environment. Never drill into a cabinet wall—this will negate the FM approval. Ensure cabinet doors are fully operational—that they properly close and engage the three-point latch.



SAFETY & STORAGE CABINETS

for Flammables



Using multiple cabinets helps you organize and segregate dangerous liquids.

Sure-Grip® EX Safety Cabinets for Flammables

Safety cabinets offer safe, dependable flammable liquid storage and protection

Protect workers, reduce fire risks, and improve productivity by storing flammable fuels and chemicals in code-compliant safety cabinets. Designed to meet OSHA and NFPA 30 standards, Sure-Grip® EX cabinets are constructed of sturdy 18-gauge (1-mm) thick double-wall, welded steel with 1-1/2-in (38-mm) of insulating air space for fire resistance. High-performance, self-latching doors close easily and securely for maximum protection under fire conditions. Fail-safe closing mechanism ensures three-point stainless steel bullet latching system works every time.

For added security, U-Loc™ handle comes with a cylinder lock and key set or accepts an optional padlock.

Haz-Alert™ reflective warning labels are highly visible under fire conditions or during power outages when illuminated with a flashlight.

Patented SpillSlope® galvanized steel shelves direct spills to back and bottom of a leakproof sump. They adjust on 3-in (76-mm) centers for versatile storage. Cabinets also feature a leakproof 2-in (51-mm) bottom sump, dual vents with flame arresters, four adjustable self-leveling feet, grounding connector and trilingual warning label. Durable lead-free epoxy/polyester powder-coat finish provides excellent chemical resistance.

All cabinets are FM-approved and come with a ten-year warranty.

Self-closing models also meet NFPA 1 and the International Fire Code. They shut and latch automatically when a fusible link melts at 165°F (74°C) under fire conditions. Unique, concealed self-closing mechanism offers obstruction-free access to contents.



8945001



8945201



8930001



8960001



Capacity Gallons/Liters	Number of Doors and Style	Dimensions H x W x D		Adj Shelves	Sump Capacity Gallons/Liters	Approv/Lstg Regulation	Sure-Grip® Model No	Ship Wt lb/kg	Extra Shelf Model No
		Exterior	Interior						
30/114	2 door, manual	44 x 43 x 18 in	39.625 x 39.5 x 14.562 in	1	5.2/19.7	FM,N,O,A	8930001	231/105	29937
	2 door, self-close	1118 x 1092 x 457 mm	1006 x 1003 x 370 mm			FM,N,O,A,I	8930201	238/108	
45/170	2 door, manual	65 x 43 x 18 in	60.5 x 39.5 x 14.562 in	2	8.3/31.5	FM,N,O,A	8945001	311/141	29944
	2 door, self-close	1651 x 1092 x 457 mm	1537 x 1003 x 370 mm			FM,N,O,A,I	8945201	313/142	
60/227	2 door, manual	65 x 34 x 34 in	60.5 x 30.75 x 30.34 in	2	10.7/40.6	FM,N,O,A	8960001	388/176	29945
	2 door, self-close	1651 x 864 x 864 mm	1537 x 781 x 771 mm			FM,N,O,A,I	8960201	392/178	
90/341*	2 door, manual	65 x 43 x 34 in	60.5 x 39.5 x 30.34 in	2	10.7/40.6	FM,N,O,A	8990001	481/218	29945
	2 door, self-close	1651 x 1092 x 864 mm	1537 x 1003 x 771 mm			FM,N,O,A,I	8990201		

*OSHA 29CFR 1910.106(d)(3) states that not more than 60 gallons (227L) of Category 1, 2, or 3 flammable liquids, nor more than 120 gallons (454L) of Category 4 flammable liquids may be stored in a safety cabinet.

for Flammables

Sure-Grip® EX Countertop and Compac Safety Cabinets

Store flammables safely even when available space is at a minimum

These cabinets are ideal when storing lesser quantities of flammable liquids at a workstation or adding to existing storage capacities.

Mini Cabinet offers the smallest footprint for easy mobility on service vehicles, carts and maintenance trikes. Includes 3 bungee cords to keep contents in place during movement.

Countertop Safety Cabinets allow increased access to frequently used liquids, without compromising safety. Portable size keeps work areas flexible. Use optional wall hanger assembly for wall mounting.

Compac Safety Cabinets fit almost anywhere and provide protection even where space is at a premium. Only 23-1/4-in (591-mm) wide, they hold a full 12- or 15-gallons (45- or 57-L) of flammables.



Place cabinets near points-of-use to save time by not going to a far away central storage area.



10 Year
Limited Warranty

Capacity Gallons/Liters	Number of Doors and Style	Dimensions H x W x D		Adj Shelves	Approv/Lstg Regulation	Sure-Grip® Model No	Ship Wt lb/kg	Extra Shelf Model No
		Exterior	Interior					
Aerosols	mini; 1 door, manual	22 x 17 x 8 in 559 x 432 x 203 mm	12.25 x 13.75 x 4.75 in 309 x 350 x 121 mm	1	N,O,A	8902001	43/19	—
4/15	countertop; 1 door, manual	22 x 17 x 17 in 559 x 432 x 432 mm	18.5 x 13.75 x 13.75 in 470 x 349 x 349 mm			8904001	62/28	29935
	countertop; 1 door self-close				N,O,A,I	8904201		
12/45	compac; 1 door manual	35 x 23.25 x 18 in 889 x 591 x 457 mm	30.5 x 20 x 14.56 in 775 x 508 x 370 mm		FM,N,O,A	130/59	29936	
	compac; 1 door self-close				FM,N,O,A,I			8912201
15/57	compac; 1 door manual	44 x 23.25 x 18 in 1118 x 591 x 457 mm	39.625 x 20 x 14.56 in 1006 x 508 x 370 mm		FM,N,O,A	8915001	154/70	
	compac; 1 door self-close			FM,N,O,A,I	8915201	156/70		

Sure-Grip® EX Piggyback Safety Cabinets

Expand storage and safely segregate liquids

Create a safe storage for flammables without taking up valuable floor space. Designed to mount on top of 30- and 45-gallon (114- and 170-L), manual or self-closing Sure-Grip® EX cabinets on page 45. They can also be used independently as a benchtop cabinet or stacked to provide additional storage. Turn it into a wall-mount cabinet with by ordering a wall hanger assembly 25950.



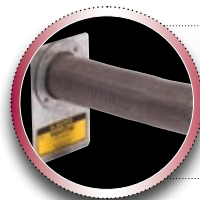
8917001

FM
APPROVED
10 Year
Limited Warranty

Capacity Gallons/Liters	Number of Doors and Style	Dimensions H x W x D		Adj Shelves	Approv/Lstg Regulation	Sure-Grip® Model No	Ship Wt lb/kg	Extra Shelf Model No
		Exterior	Interior					
12/45	2 door, manual	18 x 43 x 18 in 457 x 1092 x 457 mm	13 x 39.5 x 14.56 in 330 x 1003 x 370 mm	0	FM,N,O,A	8913001	128/58	—
	2 door, self-close				FM,N,O,A,I	8913201		
17/64	2 door, manual	24 x 43 x 18 in 610 x 1092 x 457 mm	19.5 x 39.5 x 14.56 in 495 x 1003 x 370 mm	1	FM,N,O,A	8917001	157/71	29937
	2 door, self-close				FM,N,O,A,I	8917201		

Optional Wall Hanger Assembly

Description	Model No	Ship Wt lb/kg
Wall hanger assembly	25950	7/3.0



Reduce harmful vapors in cabinets . . .

Protect employees from inhalation exposure to VOCs—see page 51 for the VaporTrap™ Cabinet Filter.

for Flammables



Place Slimline cabinet where floor space is limited.

Sure-Grip® EX Slimline Safety Cabinets

Gain valuable storage space even when space is tight

Use alone or alongside larger cabinets for expanded storage when floor space is limited. The standard slimline cabinet is 18-in (457-mm) deep and fits flush alongside a 45-gallon (170-L) cabinet. The deep slimline cabinet is 34-in (864-mm) deep and fits alongside a 60- or 90-gallon (227- or 341-L) cabinet. Both cabinets measure only 23-1/4-in (591-mm) wide.

Slimline safety cabinets have all the same features as the larger safety cabinets such as a three-point, self-latching door with self-latching handle, a 2-in (51-mm) leakproof sump, dual vents, a grounding wire connector and large trilingual warning label identifying contents. Cabinets include three SpillSlope® galvanized steel shelves that direct spills to back and bottom into a leakproof sump.



8922001

8954001



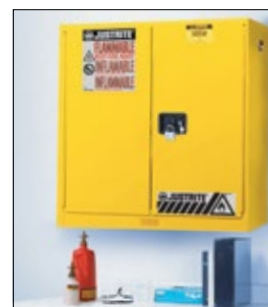
Capacity Gallons/Liters	Number of Doors and Style	Dimensions H x W x D		Adj Shelves	Approv/Lstg Regulation	Sure-Grip® Model No	Ship Wt lb/kg	Extra Shelf Model No
		Exterior	Interior					
22/83 (standard)	1 door, manual	65 x 23.25 x 18 in 1651 x 591 x 457 mm	60.5 x 20 x 14.56 in 1537 x 508 x 370 mm	3	FM,N,O,A	8922001	198/90	29936
	1 door, self-close				FM,N,O,A,I	8922201		
54/204 (deep)	1 door, manual	65 x 23.25 x 34 in 1651 x 591 x 864 mm	60.5 x 20 x 30.31 in 1537 x 508 x 771 mm		FM,N,O,A	8954001	300/136	29941
	1 door, self-close				FM,N,O,A,I	8954201		

Sure-Grip® EX Wall-Mount Safety Cabinets

Make the most of usable storage space

—hang cabinet above workbench for easy access

Gain storage space near work areas without taking up extra floor space. Eye-level positioning allows for easy access to solvents. Model 8934001 features five adjustable shelves to accommodate multiple containers. Both sizes come complete with mounting hardware.



Capacity Gallons/Liters	Number of Doors and Style	Dimensions H x W x D		Adj Shelves	Approv/Lstg Regulation	Sure-Grip® Model No	Ship Wt lb/kg	Extra Shelf Model No
		Exterior	Interior					
17/64	2 door, manual	24 x 43 x 18 in 610 x 1092 x 457 mm	19.5 x 39.5 x 14.56 in 495 x 1003 x 370 mm	1	N,O,A	8917008	153/69	—
20/76		44 x 43 x 12 in 1118 x 1092 x 305 mm	39.56 x 39.5 x 8.75 in 1006 x 1003 x 222 mm	5	FM,N,O,A	8934001	205/93	29938

Sure-Grip® EX Undercounter Safety Cabinets

Conveniently locate liquids near work areas

Take advantage of undercounter space to safely store flammable liquids. Each cabinet is sized and fitted with a 3-1/2-in H x 2-1/2-in D (89-mm x 64-mm) toe kick to mount flush with other cabinets. Dual vents with flash arresters on the back wall provide for an easy connection if ventilation is needed. Self-leveling feet adjust to 1-1/8-in (29-mm) for alignment on uneven floors.



Capacity Gallons/Liters	Number of Doors and Style	Dimensions H x W x D		Adj Shelves	Approv/Lstg Regulation	Sure-Grip® Model No	Ship Wt lb/kg	Extra Shelf Model No
		Exterior	Interior					
22/83	2 door, manual	35 x 35 x 22 in 889 x 889 x 559 mm	27.31 x 31.75 x 18.75 in 695 x 806 x 476 mm	1	FM,N,O,A	8923001	190/86	29939
	2 door, self-close				FM,N,O,A,I	8923201	205/93	

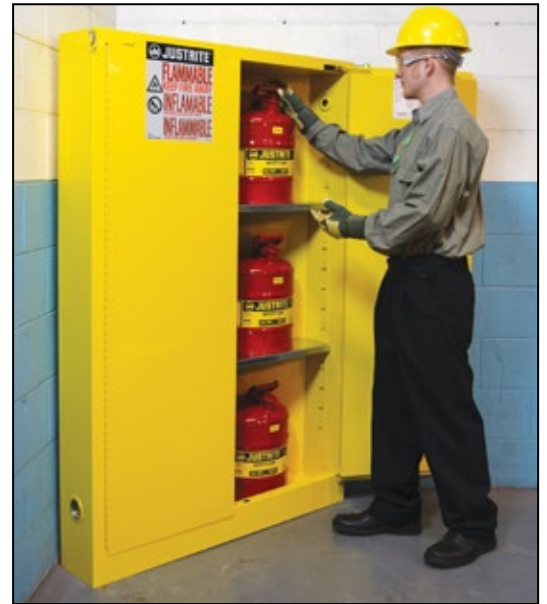
for Flammables

Sure-Grip® EX Corner Safety Cabinet **NEW**

Maximize corner space while retaining full storage capacity

Designed especially for environments where space is at a minimum, this cabinet fits nicely into an empty corner to maximize the amount of space available for storage. Improve efficiency by locating materials near point-of-use and get the most out of limited floor space. Available in 30- (114-L) and 45-gallon (170-L) capacities, with both manual and self-closing door styles, Sure-Grip® EX corner safety cabinets help to increase maximum allowable quantities of flammable and combustible liquids in control areas.

Designed to meet OSHA, NFPA 30, and NFPA 1 standards, corner safety cabinets have all of the same features as the classic line of flammable safety cabinets including a fail-safe, three-point self latching door, double-walled construction with 1-1/2-in (38-mm) air space, dual vents, a grounding connector and a large trilingual warning label identifying contents. Patented Spillslope® galvanized steel shelves direct spills to the back and bottom of a leakproof 2-in (51-mm) sump.



Safely store nine 5-gal (19-ltr) safety cans with room to spare.



8946001



Storing hazardous materials? . . .

Identify and safely store acids, bases, oxidizers, or toxic materials — see pages 54-55 for a wide variety of cabinet sizes.



8946201



8931201



10 Year
Limited Warranty

Capacity Gallons/Liters	Number of Doors and Style	Dimensions H x W x D		Adjustable Shelves	Approv/Lstg Regulation	Model No	Ship Wt lb/kg
		Exterior	Interior				
30/114	2 door, manual-close	44 in x 43 in x 21.75 in 1118 x 1093 x 552 mm	40.125 x 39.5 x 18.375 in 1019 x 1003 x 467 mm	1	N,O,A	8931001	207/94
30/114	2 door, self-close			1	N,O,A,I	8931201	212/96
45/170	2 door, manual-close	65.25 x 43 x 21.75 in 1657 x 1093 x 552 mm	61 x 39.5 x 18.375 in 1549 x 1003 x 467 mm	2	N,O,A	8946001	284/129
45/170	2 door, self-close			2	N,O,A,I	8946201	287/130

SAFETY & STORAGE CABINETS

for Flammables



Ninety minutes of fire protection provides high level of safety when point-of-use storage is required.



90-Minute EN Safety Storage Cabinets **NEW**

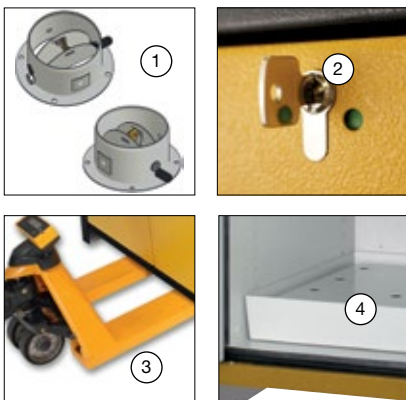
Extreme fire resistance for high risk environments—store flammables with 90-minutes of protection

- EN, OSHA and NFPA compliant—Independently fire tested and approved by FM Approvals and MPA Dresden.
- Hybrid-close door action—manual close doors stop in any position, but self close in the event of a fire to protect contents.
- Security—independent cylinder locks on each door includes locking state indicator (red/green).

Constructed using multiple layers of fire-resistant gypsum and mineral fiber insulation, cabinet body has a rugged powder coated steel exterior that provides excellent corrosion resistance. Under fire conditions, intumescent strips expand and hermetically seal all gaps to reduce heat entering the cabinet, providing 90-minutes of content protection and extended evacuation time. Hybrid style doors open or close manually and include a damper that adjusts the force needed to move the doors. In the event of a fire, the built-in fusible link system releases to allow automatic closure of doors at 122°F (50°C). Cabinets are EN compliant, FM-approved and meet NFPA 30, NFPA 1, and OSHA standards.

Powder-coat finish steel shelves adjust on 1-1/4-inch (32-mm) increments and have a load capacity of 165-lbs (75-kgs). Shelves with 1-inch (30-mm) high ledge prevent small containers from easily sliding off. Removable bottom sump with detachable perforated insert features a 3-sided lip seal to ensure leaks or spills from shelves are captured at the bottom of the 3-in (76-mm) sump, keeping containers stored in the sump clean and dry.

Haz-Alert™ reflective tri-lingual warning labels are highly visible under fire conditions or during power outages when illuminated with a flashlight. Cabinets also feature adjustable leveling feet, an integrated transport base for easy repositioning (base cover optional), and mandatory air vents per EN 14470-1. Vent butterfly valve closes securely at 158°F (70°C) in the event of a fire. Vents include flame arresters and caps for FM compliance.



1. Two top vents with butterfly valve close automatically at 158 °F (70°C) under fire conditions. Sidewalls inside the cabinet feature upper and lower black air grids with integrated ducts that connect to top vents.
2. Independent cylinder locks on each door includes locking state indicator (red/green).
3. Integrated transport base accepts pallet jack for easy repositioning of empty cabinets. Accepts optional, removable base cover.
4. Removable sump with separate detachable perforated insert allows spills to flow into sump for easy cleaning, and keeps containers elevated to stay clean and dry. Bright interior provides maximum visibility in low light conditions to quickly identify contents.



22605



22607 with optional base cover 22637



Fire Rating (Minutes)	Capacity Gallons/Liters (5 Gallon Can)	Maximum Capacity* (1 Liter Bottle)	Number of Doors and Style	Dimensions H x W x D		Adjustable Shelves	Approv/Lstg Regulation	Model No	Ship Wt lb/kg
				Exterior	Interior				
90	30/114	168	2 door, hybrid-close	76.89 x 35.16 x 24.21 in 1953 x 893 x 615 mm	64.85 x 29.5 x 20.55 in 1647 x 750 x 522 mm	3	FM,EN,N,O,A	22605	840/381
	45/170	264		76.89 x 46.97 x 24.21 in 1953 x 1193 x 615 mm	64.85 x 41.34 x 20.55 in 1647 x 1050 x 522 mm			22607	1016/461

* Achieved through the use of additional shelves, maximum capacity is an estimate and may vary depending upon container size. Check with local authority for maximum allowable quantity restrictions.

for Flammables



30-Minute EN Safety Storage Cabinets **NEW**

Safely store and segregate flammables—30 minutes of extreme fire-resistance

- EN, OSHA and NFPA compliant—Independently fire tested and approved by FM Approvals and MPA Dresden.
- Hybrid-close door action—manual close doors stop in any position, but self close in the event of a fire to protect contents.

Designed to provide 30-minutes of fire resistance, attractive two-toned yellow cabinet is constructed with a body of melamine resin and flame retardant special plates, and a steel door front covered by a textured, durable powder-coat finish. Under fire conditions, special intumescent protection strips expand and seal hermetically to close gaps between the door(s) and frame to reduce heat entering the cabinet. Hybrid style door(s) operate manually and stop in any position, but in the event of a fire, the built-in fusible link system will melt and release to allow automatic closure of door(s) at 122°F (50°C). Cabinets are EN compliant, FM-approved and meet NFPA 30, NFPA 1, and OSHA standards.

Cabinets have many of the same features as the 90-minute model, including leakproof, removable bottom sump with perforated insert, adjustable powder-coat finish steel shelves with 1-inch (30-mm) lip and load capacity of 165-lbs (75-kgs), Haz-Alert™ warning label, and a ground connection. Air vents close securely at 158°F (70°C) in the event of a fire and include flame arresters and caps. Independent cylinder lock on door(s) provides added security. Bright interior color offers maximum visibility to stored goods. Integrated transport base makes it easy to reposition empty cabinets. Accepts removable base cover (optional).



Position single-door extreme fire resistance cabinets where space is limited. Easily add a second cabinet if storage needs increase.



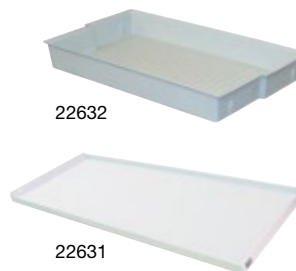
Cabinet mover helps transport cabinets easily through doorways and spaces where a pallet jack is not practical.



22601

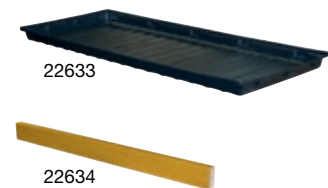


22603 with optional base cover 22635



22632

22631



22633

22634



Fire Rating (Minutes)	Capacity Gallons/Liters (5 Gallon Can)	Maximum Capacity* (1 Liter Bottle)	Number of Doors and Style	Dimensions H x W x D		Adjustable Shelves	Approval/Lstg Regulation	Model No	Ship Wt lb/kg
				Exterior	Interior				
30	30/114	168	1 door, hybrid-close	76.65 x 34.02 x 24.41 in 1947 x 864 x 620 mm	64.02 x 29.5 x 20.44 in 1626 x 750 x 519 mm	3	FM,EN,N,O,A	22601	507/230
	45/170	264	2 door, hybrid-close	76.65 x 45.83 x 24.41 in 1947 x 1164 x 620 mm	64.02 x 41.34 x 20.44 in 1626 x 1050 x 519 mm			22603	622/282

* Achieved through the use of additional shelves, maximum capacity is an estimate and may vary depending upon container size. Check with local authority for maximum allowable quantity restrictions.

Extra Accessories

Description	Fits Cabinet Styles	Dimensions	Model No	Ship Wt lb/kg
Steel shelf, powder-coated	30 and 90 Minute - 30 gallon (114 L)	W x D: 29.21 x 17.3 in (742 x 435 mm)	22630	15/7
	30 and 90 Minute - 45 gallon (170 L)	W x D: 41.02 x 17.3 in (1042 x 435 mm)	22631	11/5
Polypropylene tray	30 and 90 Minute - 30 gallon (114 L)	H x W x D: 3.47 x 29.13 x 17.09 in (88 x 740 x 434 mm)	22632	6/3
Polyethylene tray	30 and 90 Minute - 45 gallon (170 L)	H x W x D: 1.97 x 40.95 x 16.93 in (50 x 1040 x 430 mm)	22633	
Base cover	30 Minute - 30 gallon (114 L)	H x W: 3.43 x 30.95 in (87 x 786 mm)	22634	5/2
	30 Minute - 45 gallon (170 L)	H x W: 3.43 x 42.76 in (87 x 1086 mm)	22635	7/3
	90 Minute - 30 gallon (114 L)	H x W: 3.35 x 32.21 in (85 x 818 mm)	22636	3/2
	90 Minute - 45 gallon (170 L)	H x W: 3.35 x 44.02 in (85 x 1118 mm)	22637	4/2
Cabinet mover - Set of 2	30 and 90 Minute - 30 & 45 gallon (114 & 170 L)	H x W x D: 3.54 x 5.51 x 23.62 in (90 x 140 x 600 mm)	22638	20/9

SAFETY & STORAGE CABINETS

for Flammables, Tools & More



UV-protected powdercoat paint finish for long wearing protection.

Safesite™ Combo Safety Chest **NEW**

Provide safe, secure storage for flammables along with tools and other valuables

Protect flammables from ignition sources, misuse or theft by storing them in a specially designed Safety Chest. It provides protected storage of fuels, paint thinners, solvents, or other flammables typically found at construction and utility jobsites.

Top quality features include heavy-duty, 16-gauge welded steel body finished in a tough UV-protected powdercoat paint that stands up to abusive conditions. Fire resistant 16-gauge steel safety compartment liner with 18-gauge lid provides double walled protection—accepts 5-gallon (19-L) Justrite safety cans. Designed with dual security, Safesite™ provides superior protection from unauthorized access. Dual security—outside lid offers padlock security while inside compartment features U-Loc™ technology.



Description	Exterior Dimensions H x W x D		Model No	Ship Wt lb/kg
	Exterior	Interior		
Safesite™ Combo Safety Chest	29.5 x 48 x 24 in 749 x 1219 x 610 mm	lg: 21 x 30.5 x 23.75 in 533.5 x 775 x 603 mm	16036	196/90
		sm: 18 x 12.25 x 21 in 457 x 311 x 533.5 mm		

Accessories

Description	Dimensions	Load Capacity (kg)	Model No	Ship Wt lb/kg
4 Heavy-duty casters (2-locking)	5 in dia x 1.5 in width	2000 lb (907)	16043	17/8
4 casters (2-locking)	127 x 38 mm	1120 lb (508)	16044	303/137
Set of two No. 5 Master Locks			50963A	4/2

Document Storage Boxes

Keep your important papers readily available while protecting them from moisture and dirt

Safely store manuals and documents in these weather-resistant polyethylene storage boxes. Each box is bright red for high visibility and features a smooth area for labels. Use the label pack provided that includes two blank labels and labels printed "SDS" and "Instruction Manual". Boxes come with heavy-duty double-sided tape for easy installation. Large size accepts SDS binder; medium and large sized units accept padlock when security is a concern.



23306



23303



23304



23305



Description	Approx Interior Dimensions H x W x D	Exterior Dimensions H x W x D	Lock Hole Dia	Single Unit		Master Carton Packs			
				Model No	Ship Wt lb/kg	Qty Per Master Ctn	Model No	Ship Wt lb/kg	
Medium top opening	11.5 x 8.75 x 1.625 in 292 x 222 x 41 mm	12.5 x 10.25 x 2.25 in 318 x 260 x 57 mm	0.25 in/6 mm	S23303	2/1	20	23303	35/16	
Medium front opening	12.25 x 8.625 x 1 in 311 x 219 x 25 mm	14.5 x 11 x 2.125 in 368 x 279 x 54 mm	0.375 in/10 mm	S23304	3/1.5		23304	42/19	
Tube twist on lid	12 x 3 Dia in 305 x 76 Dia mm	12.5 x 3.75 OD in 318 x 94 OD mm	—	S23305	1/0.5		23305	11/5	
Large front opening	13.25 x 10.75 x 2.25 in 337 x 273 x 57 mm	15.75 x 13.125 x 3.625 in 400 x 333 x 90 mm	0.375 in/10 mm	S23306	4/2	10	23306	33/15	
Label pack (4 yellow labels: 2 blank and 2 printed - SDS and instruction manual)				—	—	—	20	23310	11/5

Accessories for Safety Cabinets

VaporTrap™ Safety Cabinet Filter

Improves your work environment by reducing employee's inhalation exposure to VOC's

Install a VaporTrap™ Filter to reduce harmful VOC vapors inside your safety cabinets. Activated carbon filter medium contained in a stainless steel mesh cartridge adsorbs the volatile organic chemical vapors from cabinets storing flammable liquids. Sturdy 4-in x 5-1/2-in (102-mm x 139-mm) magnetized base offers flexible placement anywhere within the cabinet. Date notation area on label serves as a reminder for replacement; life cycle varies based upon vapor types and concentrations.

Description	Nom. Dimensions Filter L x D	Model No	Ship Wt lb/kg
VaporTrap™ Filter (2 pk.)	8.75 x 2.25 in (222 x 57 mm)	29916	4/2

Note: Due to variables such as the chemical itself, its purity or its vapor pressure, temperature, humidity, charcoal age, etc., it is difficult to estimate VOC vapor adsorption rates. The Justrite VaporTrap™ Carbon Filter is not intended to be used as a substitute for using safe closed containers as required by OSHA and the EPA. It is important to clean up spills and residues from the cabinet and containers.



For increased safety, position one or two VaporTrap™ Filters anywhere inside the cabinet.

Safety Cabinet Accessories

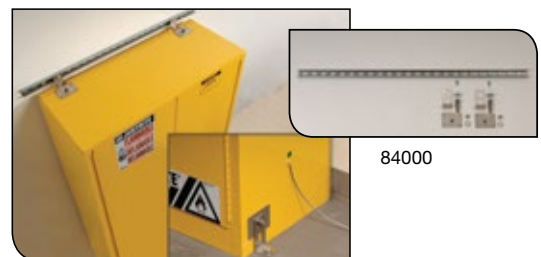
Accessories offer organization and convenience

Steel Shelf Dividers fit all Justrite cabinets with 14-in (355-mm) deep shelves and come in a set of four. Simply place over shelf and slide into position as desired.

Leg Riser Frame provides sturdy, stable support for easy relocation of empty cabinet with forklift or pallet jack. High leg frame makes it easy to clean underneath and keeps cabinet away from floor moisture. Includes leg levelers and safety warning label "Forklift Only When Empty." Frame fits Justrite cabinets with footprint of 43-in W x 18-in D (1092-mm x 457-mm).

Rolling Cart makes it easy to move a heavy safety cabinet—transport solvents and chemicals directly to your work area. All welded 1/8-in (3-mm) thick heavy-duty steel with reinforced corners provides superior durability. Large 5-in (127-mm) poly caster wheels feature brakes for added safety. Ergonomic 1-1/4-in (31.75-mm) push handle is removable. Frame fits any cabinet with footprint of 43-in W x 18-in D (1092-mm x 457-mm) with a maximum height of 44-in (1118-mm).

Seismic Bracket Kit provides increased stability—ideal for earthquake or hurricane prone areas. One kit secures any safety cabinet to a wall or floor. Because there are no holes created, the fire protection properties of the cabinet remain intact and the cabinet maintains FM approval.



Description	Load Capacity lb/kg	Dimensions H x W x D	Model No	Ship Wt lb/kg
Shelf dividers for 30G/114L, 40G/151L, 45G/170L, 12G/45L & 15G/57L compact, 22G/83L slimline and 17G/64L piggyback	—	2 x 2.03125 x 14.1719 in (51 x 52 x 360 mm)	29985	5/2
Leg riser frame for 30G/114L and 45G/170L	1000/454	5.25 x 43.75 x 18.75 in (133 x 1111 x 476 mm)	84002	31/14
Rolling cart for 30G/114L and piggyback style	500/227	42 x 43.25 x 18.25 in (1066 x 1099 x 464 mm)	84001	37/17
Seismic bracket kit fits all cabinet sizes	—	4 x 48 x 4 in (102 x 1219 x 102 mm)	84000	7/3

Drum Safety Cabinets for Flammables



Spacious design allows cabinet to be used as a pumping station.

Sure-Grip® EX Vertical Drum Safety Cabinets

Safely store solvent filled drums

Use these vertical drum safety cabinets to safely store 30- to 55-gallon (110- to 200-L) drums. The removable, adjustable, half-depth shelf provides enough head space to accommodate a drum with a pump or funnel so the cabinet can be used as a pumping or waste accumulation station, and also allows you to store Class III materials or spare accessories. Available with or without roller assemblies to easily move heavy drums. FM approved.



8962001
(shown with optional rollers 25920)



Drum Capacity Gallons/Liters	Number of Doors and Style	Dimensions H x W x D		Adj Shelves	Approv/Lstg Regulation	Sure-Grip® Model No	Ship Wt lb/kg	Extra Shelf Model No
		Exterior	Interior					
One - 55/200	2 door, manual	65 x 34 x 34 in 1651 x 864 x 864 mm	60.5 x 30.75 x 30.34 in 1537 x 781 x 771 mm	1	FM,N,O,A	8962001	397/180	29946
Two - 55/200*		65 x 59 x 34 in 1651 x 1499 x 864 mm	60.5 x 86.5 x 30.34 in 1537 x 2197 x 771 mm		N,O,A	8991001	611/277	29947
Two - 30/110	2 door, manual with drum rollers	65 x 43 x 34 in	60.5 x 39.5 x 30.34 in		FM,N,O,A	8990601	496/225	—
	2 door, self-close with drum rollers	1651 x 1092 x 864 mm	1537 x 1003 x 771 mm		FM,N,O,A,I	8990701		

*OSHA 29CFR 1910.106(d)(3) states that not more than 60 gallons (227L) of Category 1, 2, or 3 flammable liquids, nor more than 120 gallons (454L) of Category 4 flammable liquids may be stored in a safety cabinet.

Sure-Grip® EX Horizontal Drum Safety Cabinets

Use for drum storage or as a dispensing station

Safely house horizontal drums for use in gravity-flow dispensing applications. The interior provides space for a drip-can and includes tracks to guide drum cradle (sold separately below) into position. FM approved.



8993201 (shown with
optional cradle 08800)



Drum Capacity Gallons/Liters	Number of Doors and Style	Dimensions H x W x D		Approv/Lstg Regulation	Sure-Grip® Model No	Ship Wt lb/kg
		Exterior	Interior			
One - 55/200	2 door, manual	50 x 30 x 48 in 1270 x 762 x 1219 mm	46.375 x 27 x 44.75 in 1178 x 686 x 1137 mm	FM,N,O,A	8993001	370/168
	2 door, self-close			FM,N,O,A,I	8993201	

*OSHA 29CFR 1910.106(d)(3) states that not more than 60 gallons (227L) of Category 1, 2, or 3 flammable liquids, nor more than 120 gallons (454L) of Category 4 flammable liquids may be stored in a safety cabinet.

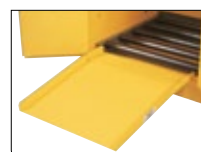
Ramp and Accessories for Drum Cabinets

Makes drum handling easier

Use the cabinet ramp to easily load drums into a cabinet using a cart. Ramp fits over the sill to keep securely in place. Tread design on surface maximizes traction. Fits all styles of Justrite drum cabinets. Load limit is 750 lb (340 kg). Not for use with wheeled drum cradle 08800.

Use drum roller for vertical storage cabinet 8962001 (sold separately above) to easily maneuver heavy drums. Use wheeled drum cradle for positioning a horizontal drum for gravity-flow dispensing.

Description	Model No	Ship Wt lb/kg
Drum cabinet ramp, 24 x 24 in (610 x 610 mm)	25932	29/13
Drum roller for single 55-gallon (200 L) vertical drum cabinet	25920	53/24
Drum cradle, 600 lb (272-kg) capacity	08800	35/16



Ramp side rails provide strength and guidance



08800

for Combustibles

Sure-Grip® EX Safety Cabinets for Combustibles

Safe storage for paints and inks

Easily separate and identify Class III combustibles using these red safety cabinets. Adjustable shelves accommodate many smaller paint tins, aerosols and inks found in printing, painting, furniture and motor vehicle operations. Cabinets feature sturdy double-wall, 18-gauge (1-mm) steel construction with 1-1/2-in (38-mm) of air space and dual flame arresting vents. Cabinets are also available in 20-, 60- and 96-gallon (76-, 227- and 363-L) sizes—ask your distributor for details.

Cabinets are FM-approved.



8930111



Multiple adjustable SpillSlope® safety shelves provide storage versatility for different sized paint cans.



Capacity Gallons/Liters	Number of Doors and Style	Dimensions H x W x D		Adj Shelves	Approv/Lstg Regulation	Sure-Grip® Model No	Ship Wt lb/kg	Extra Shelf Model No	
		Exterior	Interior					Full Depth	Half Depth
40/151	2 door, manual	44 x 43 x 18 in	39.56 x 39.5 x 14.56 in	3	FM,N,O,A	8930111	238/108	29937	
	2 door, self-close	1118 x 1092 x 457 mm	1006 x 1003 x 370 mm		FM,N,O,A,I	8930311	254/115		

Sure-Grip® EX Double-Duty Safety Drum Cabinets

Store drum and safety cans in a single cabinet

Double-duty yellow cabinets safely store flammable liquids. They feature two separate compartments that fit one vertical 55- or 30-gallon (200- or 110-L) drum and up to twelve 5-gallon (19-L) safety cans. Cabinets feature self-latching, three-point locking door for maximum protection under fire conditions. Latching system engages automatically when the door is pushed closed.

Cabinets include drum rollers in the sump and one half-depth shelf in the drum compartment plus two full-size adjustable shelves in the can compartment. Sturdy 18-gauge (1-mm) double-wall steel construction offers excellent durability. Self-close model features a fusible link that holds doors wide open during use and melts at 165°F (74°C), allowing the doors to close automatically in the event of a fire.



8992601 ← 591-mm → ← 778-mm →



Drum Capacity Gallons/Liters	Number of Doors and Style	Dimensions H x W x D		Approv/Lstg Regulation	Sure-Grip® Model No	Ship Wt lb/kg	Extra Shelf Model No	
		Exterior	Interior				Full Depth	Half Depth
115/435*	2 door, manual with rollers	65 x 59 x 34 in 1651 x 1499 x 864 mm	sm: 60.5 x 23.25 x 30.375 1537 x 591 x 771 mm	N,O,A	8992601	694/315	29974	29946
	2 door, self-close with rollers		lg: 60.5 x 30.625 x 30.375 1537 x 778 x 771 mm	N,O,A,I	8992701			

*OSHA 29CFR 1910.106(d)(3) states that not more than 60 gallons (227L) of Category 1, 2, or 3 flammable liquids, nor more than 120 gallons (454L) of Category 4 flammable liquids may be stored in a safety cabinet.

for Hazardous Material



Segregate and identify hazardous materials to ensure a safe working environment.



Encased self-closing mechanism provides obstruction-free access to top shelf space. Fusible link melts at 165°F (74°C) to automatically close door(s) under fire conditions.

Safety Cabinets for Hazardous Materials **NEW**

Identify and safely store hazardous materials such as acids, bases, oxidizers, or toxic materials

High-performance cabinets feature all-welded, 18-gauge (1-mm) double-walled steel construction with 1½-inch (38-mm) air space, a 2-inch (51-mm) leakproof sump, U-Loc™ handle, dual vents with flame arresters, adjustable self-leveling feet, and ground wire connector. Application-specific labels identify contents to safely store and segregate incompatible chemicals.

Self-closing door(s) with a three-point, stainless steel bullet latching system securely close for maximum protection under fire conditions. They self-index and self-latch to close in sequence to ensure a tight closure from top to bottom.

For increased chemical resistance against leaks or drips, steel SpillSlope® adjustable shelves include a polyethylene tray that sits on top of the shelf, as well as a separate polyethylene liner for the bottom sump. The popular 30-gal (114-L) cabinet includes an extra polyethylene work tray that can be placed on top of cabinet for a handy work surface.

Cabinets are FM approved (except for 4-gal /15-L models), and come with a ten-year warranty.



10 Year
Limited Warranty

Capacity Gallons/Liters	Number of Doors and Style	Dimensions H x W x D		Adj Shelves	Approv/Lstg Regulation	Sure-Grip® Model No	Ship Wt lb/kg	Extra Shelf Model No		
		Exterior	Interior					w/tray	shelf	tray
Classic Safety Cabinets										
30/114	2 door, self-close	44 x 43 x 18 in 1118 x 1092 x 457 mm	39.625 x 39.5 x 14.56 in 1006 x 1003 x 370 mm	1	FM,H,A,I	8630281	240/109	29958	29937	29962
45/170	2 door, self-close	65 x 43 x 18 in 1651 x 1092 x 457 mm	60.5 x 39.5 x 14.56 in 1537 x 1003 x 370 mm	2		8645281	303/137			
60/227	2 door, self-close	65 x 34 x 34 in 1651 x 864 x 864 mm	60.5 x 30.75 x 30.34 in 1537 x 781 x 771 mm			8660281	370/168	29980	29944	29961
90/341	2 door, self-close	65 x 43 x 34 in 1651 x 1092 x 864 mm	60.5 x 39.5 x 30.34 in 1537 x 1003 x 771 mm			8690281	436/198	—	29945	29972
Countertop Safety Cabinet										
4/15	1 door, self-close	22 x 17 x 17 in 559 x 432 x 432 mm	18.5 x 13.75 x 13.75 in 470 x 349 x 349 mm	1	H,A,I	8604281	69/31	29973	29935	25934
Compac Safety Cabinets										
12/45	1 door, self-close	35 x 23.25 x 18 in 889 x 591 x 457 mm	30.5 x 20 x 14.56 in 775 x 508 x 370 mm	1	FM,H,A,I	8612281	123/56	29959	29936	29968
15/57	1 door, self-close	44 x 23.25 x 18 in 1118 x 591 x 457 mm	39.625 x 20 x 14.56 in 1006 x 508 x 370 mm			8615281	156/70			
Piggyback Safety Cabinets										
12/45	2 door, self-close	18 x 43 x 18 in 457 x 1092 x 457 mm	13 x 39.5 x 14.56 in 330 x 1003 x 370 mm	0	FM,H,A,I	8613281	132/60	—		
17/64	2 door, self-close	24 x 43 x 18 in 610 x 1092 x 457 mm	19.5 x 39.5 x 14.56 in 495 x 1003 x 370 mm	1		8617281	174/79	29958	29937	29962
Slimline Safety Cabinets										
22/83 (standard)	1 door, self-close	65 x 23.25 x 18 in 1651 x 591 x 457 mm	60.5 x 20 x 14.56 in 1537 x 508 x 370 mm	3	FM,H,A,I	8622281	211/96	29959	29936	29968
54/204 (deep)	1 door, self-close	65 x 23.25 x 34 in 1651 x 591 x 864 mm	60.5 x 20 x 30.34 in 1537 x 508 x 771 mm			8654281	314/142	—	29941	29907
Undercounter Safety Cabinet										
22/83	2 door, self-close	35 x 35 x 22 in 889 x 889 x 559 mm	27.375 x 31.75 x 18.75 in 695 x 806 x 476 mm	1	FM,H,A,I	8623281	197/89	29960	29939	29965

for Hazardous Material

ChemCor® Lined Safety Cabinets **NEW** for Hazardous Materials

Seamless ChemCor® finish protects interior cabinet surfaces from rust and corrosion

For superior protection against corrosion from drips and off-gassing from harsh chemicals, use ChemCor® lined safety cabinets. They feature a unique, flame-coated thermoplastic finish on interior doors, shelves, walls, ceiling, and sump. The non-porous, seam-free surface eliminates the need for corrosion-prone rivets or fasteners. It resists staining and cleans up easily. Popular 30-gal (114-L) cabinet includes a separate polyethylene work tray that can be placed on top of cabinet for a handy work surface.

Cabinets are FM approved (except for 4-gal/15-L models), and come with a ten-year warranty.



Store small quantities of hazardous materials at point-of-use for quick and easy access.



Label pack includes ten content specific labels.



86452821



86222821



86122821



86042821



Capacity Gallons/Liters	Number of Doors and Style	Dimensions H x W x D		Adj Shelves	Approv/Lstg Regulation	Sure-Grip® Model No	Ship Wt lb/kg	Extra Shelf Model No
		Exterior	Interior					
Classic Safety Cabinets								
30/114	2 door, self-close	44 x 43 x 18 in 1118 x 1092 x 457 mm	39.625 x 39.5 x 14.56 in 1006 x 1003 x 370 mm	1	FM,H,A,I	86302821	251/114	29957
45/170	2 door, self-close	65 x 43 x 18 in 1651 x 1092 x 457 mm	60.5 x 39.5 x 14.56 in 1537 x 1003 x 370 mm	2		86452821	322/146	
60/227	2 door, self-close	65 x 34 x 34 in 1651 x 864 x 864 mm	60.5 x 30.75 x 30.34 in 1537 x 781 x 771 mm			86602821	400/181	
Countertop Safety Cabinet								
4/15	1 door, self-close	22 x 17 x 17 in 559 x 432 x 432 mm	18.5 x 13.75 x 13.75 in 470 x 349 x 349 mm	1	H,A,I	86042821	70/32	29930
Compac Safety Cabinets								
12/45	1 door, self-close	35 x 23.25 x 18 in 889 x 591 x 457 mm	30.5 x 20 x 14.56 in 775 x 508 x 370 mm	1	FM,H,A,I	86122821	137/62	29904
Piggyback Safety Cabinets								
12/45	2 door, self-close	18 x 43 x 18 in 457 x 1092 x 457 mm	13 x 39.5 x 14.56 in 330 x 1003 x 370 mm	0	FM,H,A,I	86132821	142/64	—
17/64	2 door, self-close	24 x 43 x 18 in 610 x 1092 x 457 mm	19.5 x 39.5 x 14.56 in 495 x 1003 x 370 mm	1		86172821	175/79	29957
Slimline Safety Cabinets								
22/83 (standard)	1 door, self-close	65 x 23.25 x 18 in 1651 x 591 x 457 mm	60.5 x 20 x 14.56 in 1537 x 508 x 370 mm	3	FM,H,A,I	86222821	211/96	29904
Undercounter Safety Cabinet								
22/83	2 door, self-close	35 x 35 x 22 in 889 x 889 x 559 mm	27.375 x 31.75 x 18.75 in 695 x 806 x 476 mm	1	FM,H,A,I	86232821	199/90	29929

for Corrosives



Safely store corrosives in fire-resistant steel safety cabinets.

Sure-Grip® EX Steel Classic Safety Cabinets for Corrosives

Exclusively formulated paint and poly trays resist acids, bases and solvents

Justrite blue steel safety cabinets for corrosives have the same quality safety features as the cabinets for flammables. All models come with double-wall construction, dual vents, grounding wire connections, adjustable shelves, leakproof sills, three-point self-latching doors and leveling feet. Polyethylene trays attached to galvanized steel shelves and a separate polyethylene liner for the bottom sump resist aggressive chemicals. Easily remove the liner for quick cleaning of drips and leaks. The popular 30-gallon (114-L) cabinet also includes an extra polyethylene work tray that can be secured to cabinet top for a handy work surface. An all epoxy baked-on powder-coat finish, inside and out, provides increased chemical resistance. FM approved.



8930021



8922221



8913021 on top of 8930021



10 Year
Limited Warranty

Capacity Gallons/Liters	Number of Doors and Style	Dimensions H x W x D		Adj Shelves	Approv/Lstg Regulation	Sure-Grip® Model No	Ship Wt lb/kg	Extra Shelf Model No			
		Exterior	Interior					w/tray	shelf	tray	
Piggyback Safety Cabinets											
12/45	2 door, manual	18 x 43 x 18 in	13 x 39.5 x 14.562 in	0	FM,A9	8913021	130/59	—	—	—	
	2 door, self-close	457 x 1092 x 457 mm	330 x 1003 x 370 mm			8913221	132/60				
17/64	2 door, manual	24 x 43 x 18 in	19.5 x 39.5 x 14.562 in	1		8917021	149/68	29958	29937	29962	
	2 door, self-close	610 x 1092 x 457 mm	495 x 1003 x 370 mm			8917221	151/69				
Slimline Safety Cabinets											
22/83	1 door, manual	65 x 23.25 x 18 in	60.5 x 20 x 14.56 in	3	FM,A9	8922021	201/91.0	29959	29936	29968	
	1 door, self-close	1651 x 591 x 457 mm	1537 x 508 x 370 mm			8922221					
Classic Safety Cabinets											
30/114	2 door, manual *	44 x 43 x 18 in	39.625 x 39.5 x 14.56 in	1	FM,A9	8930021	234/106.0	29958	29937	29962	
	2 door, self-close *	1118 x 1092 x 457 mm	1006 x 1003 x 370 mm			8930221	243110.0				
45/170	2 door, manual	65 x 43 x 18 in	60.5 x 39.5 x 14.56 in	2		8945021	315/143.0	29980	29944	29961	
	2 door, self-close	1651 x 1092 x 457 mm	1537 x 1003 x 370 mm			8945221	317/144.0				
60/227	2 door, manual	65 x 34 x 34 in	60.5 x 30.75 x 30.31 in			2	8960021				414/188.0
	2 door, self-close	1651 x 864 x 864 mm	1537 x 781 x 771 mm				8960221				425/193.0

* Includes cabinet top work tray.

for Corrosives

Sure-Grip® EX Steel Undercounter Safety Cabinets for Corrosives

Take advantage of unused undercounter space

Safely store corrosives under a workbench or lab counter for quick and easy access. These safety cabinets incorporate the same quality features as Justrite flammable cabinets but also include galvanized steel shelves with attached polyethylene trays and a separate polyethylene bottom sump liner that can be easily removed for cleaning drips and leaks. Baked-on blue epoxy powder-coat finish—inside and out—resists acids, bases and solvents for added chemical resistance. FM approved.



Self-latching doors include paddle handle with cylinder lock and keys.



Using non-flammable corrosives?
See page 7 for quick pouring, translucent polyethylene containers designed to resist acids and caustics.



Capacity Gallons/Liters	Number of Doors and Style	Dimensions H x W x D		Adj Shelves	Approv/Lstg Regulation	Sure-Grip® Model No	Ship Wt lb/kg	Extra Shelf Model No		
		Exterior	Interior					w/tray	shelf	tray
22/83	2 door, manual	35 x 35 x 22 in	27.375 x 31.75 x 18.75 in	1	FM,A9	8923021	209/95	29960	29939	29965
	2 door, self-close	889 x 889 x 559 mm	695 x 806 x 476 mm			8923221	212/96			

Toe kick dimensions are 3.5 in (89 mm) H x 2.5 in (64 mm) D.

Sure-Grip® EX Steel Countertop and Compac Safety Cabinets for Corrosives

Easily access most frequently used fluids

Countertop and compac cabinets let you customize your work areas and make the most of available space. These specialty cabinets have the same features as our larger cabinets plus galvanized steel shelves with attached polyethylene trays and a separate polyethylene bottom sump liner that can be easily removed for cleaning drips and leaks. Baked-on blue epoxy powder-coat finish—inside and out—resists acids, bases and solvents for added chemical resistance. FM approved.



Capacity Gallons/Liters	Number of Doors and Style	Dimensions H x W x D		Adj Shelves	Approv/Lstg Regulation	Sure-Grip® Model No	Ship Wt lb/kg	Extra Shelf Model No		
		Exterior	Interior					w/tray	shelf	tray
4/15	1 door, manual, countertop	22 x 17 x 17 in	18.5 x 13.75 x 13.75 in	1	A9	8904021	63/29	29973	29935	25934
	1 door, self-close, countertop	559 x 432 x 432 mm	470 x 349 x 349 mm			8904221	65/30			
12/45	1 door, manual, compac	35 x 23.25 x 18 in	30.5 x 20 x 14.562 in	1	FM,A9	8912021	121/55	29959	29936	29968
	1 door, self-close, compac	889 x 591 x 457 mm	775 x 508 x 370 mm			8912221	123/56			

Cabinet Replacement Parts

Cabinet Accessories

Add function and convenience with cabinet accessories

Expand storage, add new convenience to existing cabinets, or customize your new cabinet with additional shelves to meet specific workflow needs. Galvanized steel shelves hold up to 350-lb (159-kg) and adjust on 3-in (76-mm) increments for versatile storage.

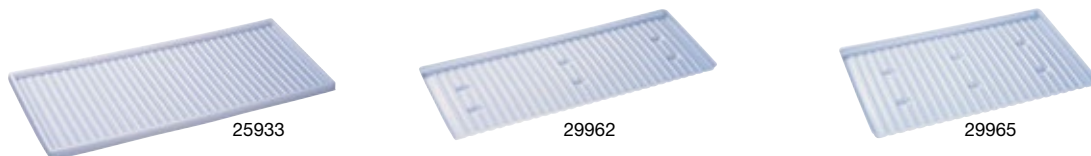


Shelves for Steel Safety Cabinets

Description	Fits Cabinet Styles	Dimensions W x D	Model No	Ship Wt lb/kg
SpillSlope® steel shelf	For 4 gallon (15 L) cabinet	13.375 x 13 in (340 x 330 mm)	29935	4/2
SpillSlope® steel shelf	12 & 15 gallon (45 L & 57 L) cabinets, 22 Gallon (83 L) Slimline	19.625 x 14 in (498 x 356 mm)	29936	6/3
SpillSlope® steel shelf	30, 40 and 45 Gallon (114 L, 151 L and 170 L) cabinets 17 Gallon (64 L) piggyback and all two door 43 in width (1092 mm width)	39.375 x 14 in (1000 x 356 mm)	29937	10/5
SpillSlope® steel shelf	20 Gallon (76 L) wallmount cabinet	39.375 x 8.625 in (1000 x 219 mm)	29938	7/3
SpillSlope® steel shelf	22 Gallon (83 L) undercounter cabinet	31.56 x 18 in (802 x 457 mm)	29939	10/5
SpillSlope® steel shelf	60 Gallon (227 L) 34 in width (864 mm width) two door cabinet	30.375 x 29 in (768 x 737 mm)	29944	16/7
SpillSlope® steel shelf	90 Gallon (341 L) cabinet	39.375 x 29 in (1000 x 737 mm)	29945	21/9
Steel half-depth shelf	For single 55 Gallon (200 L) vertical drum cabinets	30.375 x 14 in (771 x 356 mm)	29946	8/4
Steel half-depth shelf	For double 55 Gallon (200 L) vertical drum cabinets	55.375 x 14 in (1407 x 356 mm)	29947	18/8

Shelves and Accessories for Nonmetallic Storage Cabinets

Description	Fits Cabinet Styles	Dimensions W x D	Model No	Ship Wt lb/kg
Wooden shelf	24140 cabinet	34 x 16.875 in (864 x 429 mm)	24168	18/8
Wooden shelf	24150 cabinet	40 x 13.875 in (1016 x 352 mm)	24167	19/9
Poly shelf	24160 cabinet	19.625 x 14 in (498 x 356 mm)	24191	1/1
Bottom drain tray		19.625 x 29 in (498 x 737 mm)	24192	
Poly sump tray		12 x 8.5 in (305 x 216 mm)	24193	



Polyethylene Accessories (for Corrosives Cabinets)

Description	Fits Cabinet Styles	Dimensions W x D	Model No	Ship Wt lb/kg
Poly tray for shelf 29935	4 Gallon (15 L) cabinet	13.625 x 13.5 in (346 x 343 mm)	25934	2/1
Poly tray for shelf 29937 (or cabinet sump liner)	30, 40 and 45 Gallon (114 L, 151 L and 170 L) cabinets 17 Gallon (64 L) piggyback and all 2-door	38.75 x 13.5 in (984 x 343 mm)	29962	3/1
Poly tray for shelf 29939	22 Gallon (83 L) undercounter cabinets	31.125 x 18.5 in (791 x 470 mm)	29965	6/3
Poly tray for shelf 29944	60 Gallon (227 L) cabinets	29.75 x 29.5 in (756 x 749 mm)	29961	5/2
Poly tray for cabinet-top	17 Gallon (64 L) piggyback and all 2-door 30, 40 and 45 Gallon (114 L, 151 L and 170 L) cabinets	43.5625 x 18.5625 in (1106 x 471 mm)	25933	6/3
Poly tray for shelf 29936 (or cabinet sump liner)	12 & 15 Gallon (45 L & 57 L) cabinets and 22 Gallon (83 L) Slimline cabinets	18.5 x 13.875 in (470 x 352 mm)	29968	3/1

Additional Cabinet Accessories

Description	Dimensions W x D	Model No	Ship Wt kg
Wall hanger assembly (mounting kit) for 4 Gallon (15 L) compac cabinets	—	25951	4/2
Wall hanger assembly (mounting kit) for 12 & 17 Gallon (45 L & 64 L) piggyback cabinets		25950	5/2
Padlock Master Lock® No. 5	Shackle 10 mm	29933	2/1

for Corrosives

Polyethylene Acid Cabinets

One-piece construction provides excellent resistance to harsh acids and corrosives

These blue, hollow-bodied, polyethylene cabinets withstand highly corrosive acids and offer maximum protection against chemical corrosion and leaks. Both models are clearly labeled for ACID contents and accept a padlock (not included) for added security.

Countertop Cabinet stores up to two 1-quart (4-L) bottles. Door can be hinged from either side for best worktop space utilization. Polyethylene spill tray inside contains leaks and can be removed for easy cleaning. A separate polyethylene tray stores under the cabinet and can be used as a handy work tray.

Undercounter Cabinet holds up to thirty 1-quart (4-L) containers. Two segregated compartments each with an adjustable shelf let you store a variety of containers while recessed area in both doors hold small containers. Two removable sumps slide out for easy cleaning of incidental spills. Two vent holes (with removable caps) at rear accommodate pressurized vapor removal systems.



Store harsh acids under a counter for safe, convenient access.

Free expert advice . . .

Learn more about handling flammables and corrosives by visiting justritemfg.com. You'll find our RedBook guide, videos, TechTalks and more.



Compact design offers placement on lab counters for access to frequently used chemicals.



24040

24160

Capacity	Number of Doors and Style	Exterior Dimensions H x W x D	Adjustable Shelves	Model No	Ship Wt lb/kg
Two, 4-liter bottles	1 door, countertop	19.5 x 14.25 x 16.25 in 495 x 362 x 413 mm	–	24040	31/14
Thirty, 1-liter bottles	2 door, undercounter	35 x 36 x 23.5 in 889 x 914 x 597 mm	2	24160	130/59

for Corrosives

Wood Laminate Acid Cabinets

Durable and highly chemical-resistant

Safely store highly corrosive liquids such as phenol, nitric acid and sulfuric acid in these wood laminate storage cabinets. Long lasting wood construction along with stainless steel handles and hinges provide exceptional resistance to corrosion from harsh acids. Shelf adjusts on 1-1/4-in (32-mm) centers to accommodate a wide variety of containers. Cabinets include adjustable leg levelers, Haz-Alert™ reflective labels, and double key set for safety and security.

Countertop model 24120 is ideal for smaller quantities used at workbench level. Use the undercounter model 24140 as a free standing piece. It includes a removable, easy-to-clean polyethylene work surface top that is recessed 5/8-in (16-mm) to help contain incidental leaks.



24140

Capacity	Number of Doors and Style	Dimensions H x W x D		Adjustable Shelves	Model No	WHS	Ship Wt lb/kg
		Exterior	Interior				
Six, 2.5 liter bottles	2 door, countertop	18.5 x 24 x 16 in 470 x 610 x 406 mm	17 x 22.488 x 15.228 in 432 x 571 x 387 mm	0	24120	-	52/24
Thirty-six, 2.5 liter bottles	2 door, stand alone	35.75 x 36 x 22 in 908 x 914 x 559 mm	29.496 x 34.488 x 20.858 in 749 x 876 x 530 mm	1	24140		181/82
Forty-nine, 2.5 liter bottles		60 x 42 x 17.875 in 1524 x 1067 x 454 mm	54.511 x 40.488 x 17.118 in 1385 x 1028 x 435 mm		24150		276/125

Note #24140 Height dimension includes 0.75-in (19-mm) top. For undercounter usage, remove top for 22-in (559-mm) depth and adjust leg levelers which extend up to 0.75-in (19-mm).

Solid Polyethylene Acid Cabinets

Sturdy, smooth construction in an attractive design

- Suitable for highly aggressive liquids—no metal parts to corrode.
- Three-point door latch on larger units offers secure closure and vapor control.
- Toe kick on undercounter model allows user to stand closer to counter—less leaning, better ergonomics.



24015

Solid polyethylene white acid cabinets have excellent chemical resistance to handle the most corrosive chemicals. A protective, all-welded bottom sump and a clean, sleek design complement any laboratory setting. Fully welded, liquid-tight 2-in (51-mm) sump contains accidental spills and makes clean up a snap. Shelf on larger units adjusts on 3-in (76-mm) center. Door accepts a padlock for security.

Capacity	Number of Doors and Style	Dimensions H x W x D		Adjustable Shelves	Model No	Ship Wt lb/kg
		Exterior	Interior			
Six, 2.5 liter bottles	1 door, countertop	22 x 17 x 17 in 559 x 432 x 432 mm	21.5 x 16.5 x 16.25 in 546 x 419 x 413 mm	-	24004	26/12
Thirty-six, 2.5-liter bottles	2 door, undercounter	35.75 x 36 x 21.75 in 908 x 914 x 552 mm	35.25 x 35.5 x 20.875 in 895 x 902 x 530 mm	1	24010	160/73
Thirty-six, 2.5-liter bottles	2 door, stand alone	36.75 x 36 x 21.75 in 933 x 914 x 552 mm	35.5 x 35.5 x 20.875 in 902 x 902 x 530 mm		24015	